



COMEDY OF ERRORS

COSTUME DESIGN INSPIRATION AND RESEARCH

Bucknell University

Spring 2017

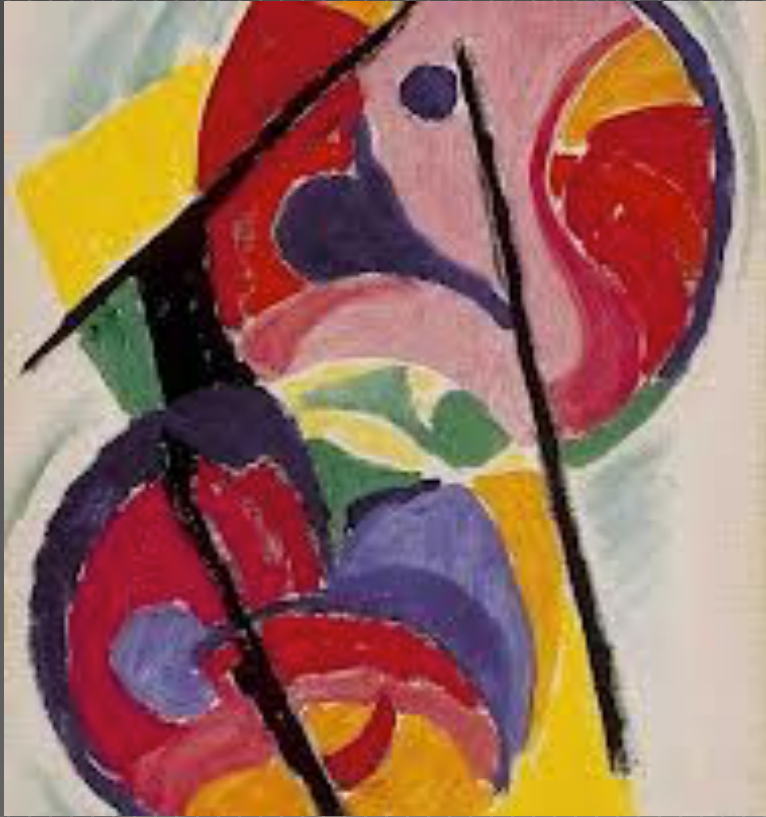
Paula D. Davis

Assisted by Lena Madison

Color, shape, texture.....

INSPIRATION IMAGES

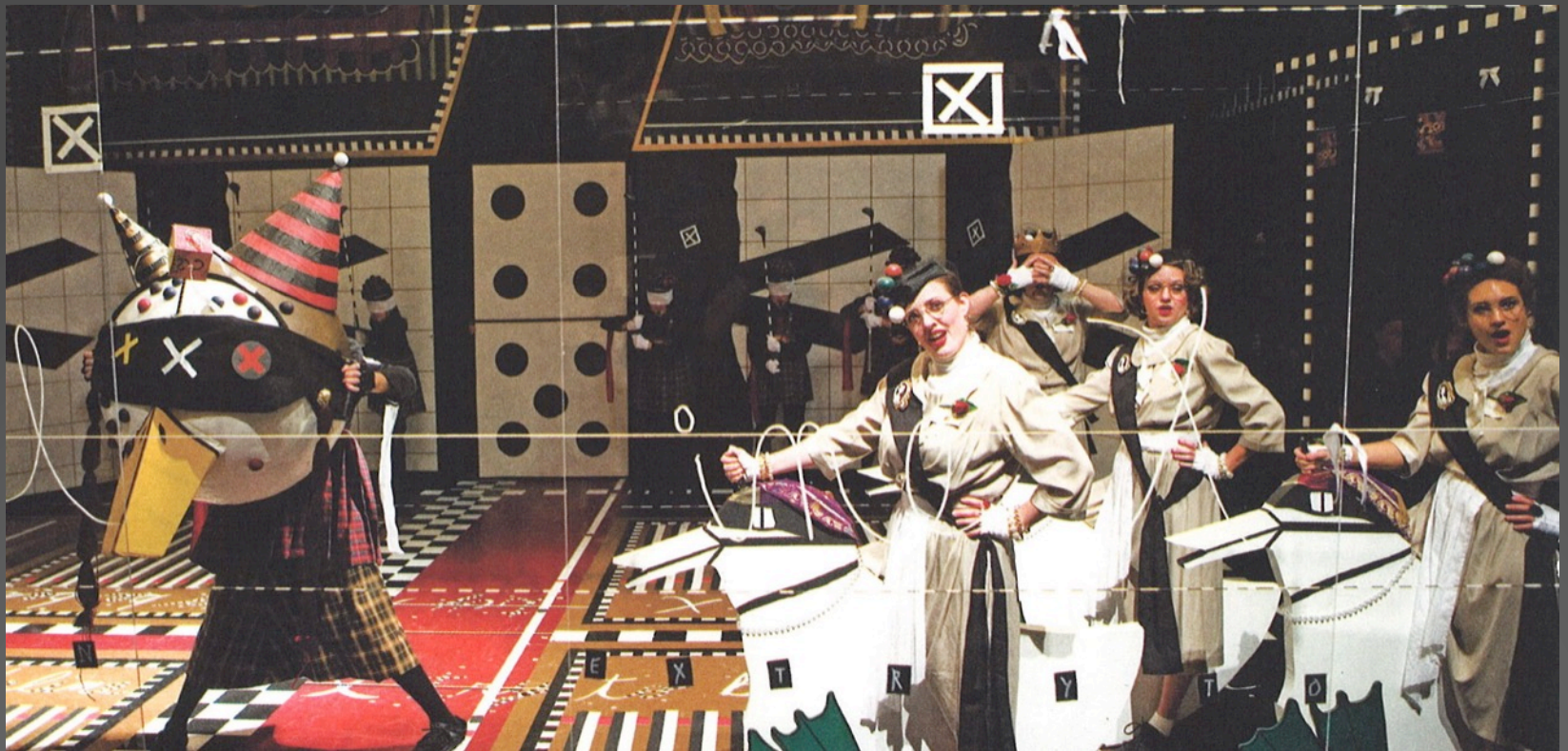
CIRCLE, SQUARE, TRIANGLE, AND COLOR!



FUN, PLAYFUL, BRIGHT!



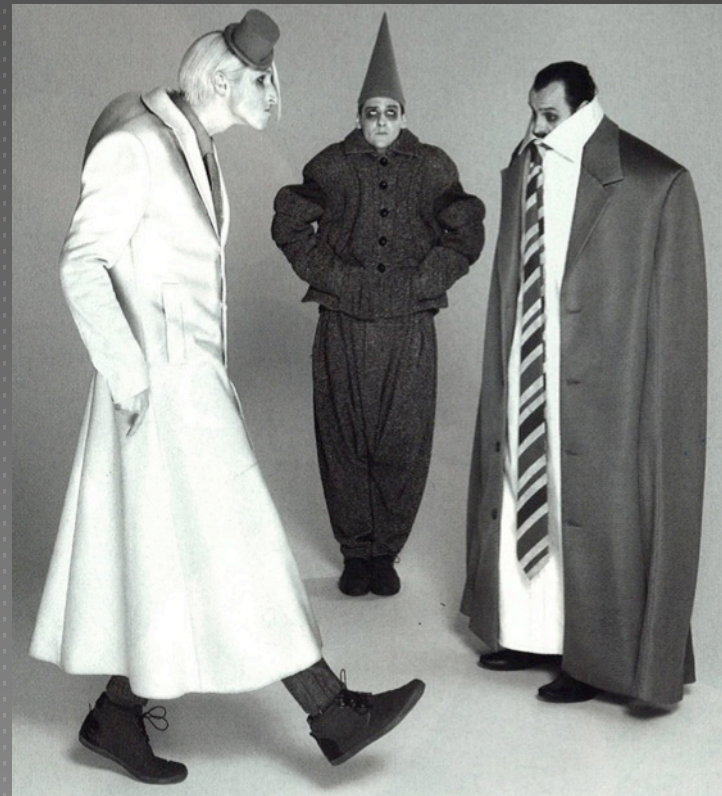
GEOMETRIC!



CHARACTER TYPES!



EXAGGERATION, PROPORTION!



COSTUME ACCESSORIES!



SHAPES AND TEXTURES!



TWINS, VELVET, AND GLITZ!



Past and present.....

SHAKESPEARE COMPANIES

























Men and women and women as men....

GENDER BENDER























TWINS



Emilia/The Abbess











